

GROUND FLOOR

GROUND FLOOR

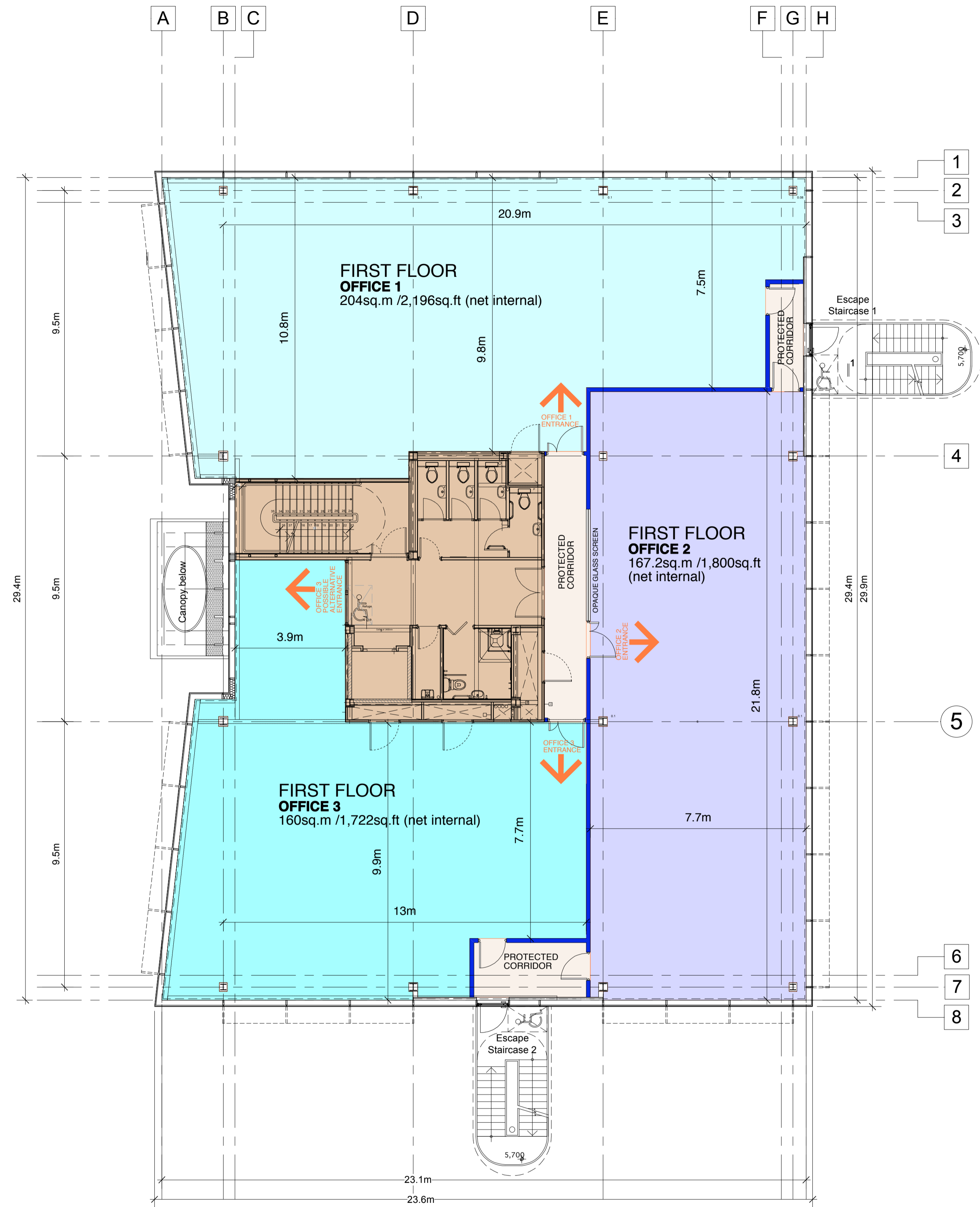
OFFICE 1
157.4sq.m / 1,694sq.ft (net internal)

OFFICE 2
156.8sq.m / 1,688sq.ft (net internal)

OFFICE 3
106.8sq.m / 1,150sq.ft (net internal)

CORE & CIRCULATION
30.6sq.m / 329sq.ft (net internal)

TOTAL
451.6sq.m / 4,861sq.ft (net internal)



FIRST FLOOR

FIRST FLOOR

OFFICE 1
204sq.m / 2,196sq.ft (net internal)

OFFICE 2
167.2sq.m / 1,800sq.ft (net internal)

OFFICE 3
160sq.m / 1,722sq.ft (net internal)

CORE & CIRCULATION
33.2sq.m / 357sq.ft (net internal)

TOTAL
564.4sq.m / 6,075sq.ft (net internal)

REV.	DATE	DESCRIPTION
PROJECT CROSSWAYS POINT CROSSWAYS BOULEVARD DARTFORD		
DRAWING OFFICE B / CP15 POSSIBLE TENANT SUBDIVISION PLAN GROUND & FIRST FLOOR		
CLIENT CROSSWAYS COMMERCIAL ESTATES LIMITED		
SCALE 1:100 @ A1	DRAWN	
DATE MARCH 2008		
DRAWING No. 0678 / SD15		
© copyright retained		